

## Choose the right size of Björnkläder clothing for you

You and your clothing perform better when your garments are of the right size. To make sure you get the right size, take your body measurements as illustrated and compare them with the sizing chart which also shows body measurements. When designing the garments, we add the accessories that ensure ease of movement and comfort.

### Men's sizes (this indicates body measurements, not the garment)

<b>Average height and build</b>	<b>C42</b>	<b>C44</b>	<b>C46</b>	<b>C48</b>	<b>C50</b>	<b>C52</b>	<b>C54</b>	<b>C56</b>	<b>C58</b>	<b>C60</b>	<b>C62</b>
A Chest	84	88	92	96	100	104	108	112	116	120	124
B Waist	72	76	80	84	88	92	97	102	108	114	120
C Hips	90	93	97	101	105	109	113	117	121	125	129
D Inside leg	77	78	79	80	81	82	83	84	84	85	85
	<b>XS</b>	<b>S</b>	<b>S</b>	<b>M</b>	<b>M</b>	<b>L</b>	<b>L</b>	<b>XL</b>	<b>XL</b>	<b>2XL</b>	<b>2XL (cont. below)</b>
<b>Average height and build</b>	<b>C64</b>	<b>C66</b>	<b>C68</b>	<b>C70</b>							
A Chest	128	132	136	140							
B Waist	126	132	138	144							
C Hips	133	137	141	145							
D Inside leg	86	86	86	86							
	<b>3XL</b>	<b>3XL</b>	<b>4XL</b>	<b>4XL</b>							

<b>Tall, average build</b>	<b>C144</b>	<b>C146</b>	<b>C148</b>	<b>C150</b>	<b>C152</b>	<b>C154</b>	<b>C156</b>	<b>C158</b>
A Chest	88	92	96	100	104	108	112	116
B Waist	76	80	84	88	92	97	102	108
C Hips	93	97	101	105	109	113	117	121
D Inside leg	83	84	85	86	87	88	89	89

<b>Short, stout</b>	<b>D88</b>	<b>D92</b>	<b>D96</b>	<b>D100</b>	<b>D104</b>	<b>D108</b>	<b>D112</b>	<b>D116</b>	<b>D120</b>	<b>D124</b>
A Chest	88	92	96	100	104	108	112	116	120	124
B Waist	82	86	90	94	98	103	108	114	120	126
C Hips	95	99	103	107	111	115	119	123	127	131
D Inside leg	74	75	76	77	78	79	80	80	81	81

### Women's sizes (this indicates body measurements, not the garment)

	<b>C34</b>	<b>C36</b>	<b>C38</b>	<b>C40</b>	<b>C42</b>	<b>C44</b>	<b>C46</b>	<b>C48</b>	<b>C50</b>	<b>C52</b>	<b>C54</b>	<b>C56</b>	<b>C58</b>
A Bust	80	84	88	92	96	100	104	110	116	122	128	134	138
B Waist	66	69	72	76	80	84	88	94	100	106	112	118	124
C Hips	90	93	96	99	102	106	110	116	122	128	134	140	146
D Inside leg	78	79	80	80	81	81	81	82	82	82	83	83	83
	<b>XS</b>	<b>S</b>	<b>S</b>	<b>M</b>	<b>M</b>	<b>L</b>	<b>L</b>	<b>XL</b>	<b>XL</b>	<b>2XL</b>	<b>2XL</b>	<b>3XL</b>	<b>3XL</b>

#### A. Bust:

Around the fullest part of the bust

#### B. Waist:

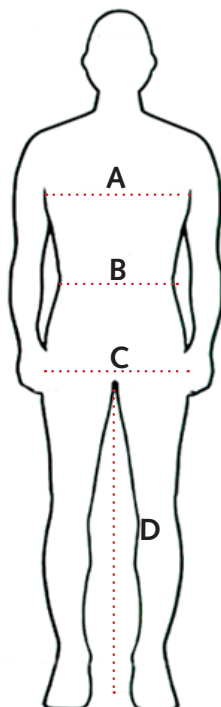
Around the natural waistline

#### C. Hips:

Around the fullest part of the hips

#### D. Inside leg:

Down the inside leg from the crotch to the sole of the foot



# Order the right size - convert to & from inches

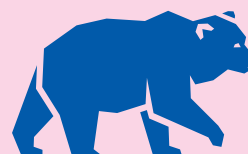
The right size improves the function of your workwear garments. Check your body measurements according to the sketch to determine what size you need. The extra inches to make the clothes comfortable are added by us when we construct the garments.

## Conversion table, Waist x Inseam, Men's sizes

C44 = 30x30	30x30 = C44
C46 = 32x30	32x30 = C46
C48 = 33x32	32x32 = C146
C50 = 34x32	33x30 = D92
C52 = 36x32	33x32 = C48
C54 = 38x32	33x34 = C148
C56 = 40x32	34x30 = D96
C58 = 42x34	34x32 = C50
C60 = 44x34	34x34 = C150
C62 = 48x34	36x30 = D100
C64 = 50x34	36x32 = C52
C146 = 32x32	36x34 = C152
C148 = 33x34	38x30 = D104
C150 = 34x34	38x32 = C54
C152 = 36x34	38x34 = C154
C154 = 38x34	40x30 = D108
C156 = 40x34	40x32 = C56
C158 = 42x36	40x34 = C156
D92 = 33x30	42x32 = D112
D96 = 34x30	42x34 = C58
D100 = 36x30	42x36 = C158
D104 = 38x30	44x32 = D116
D108 = 40x30	44x34 = C60
D112 = 42x32	46x32 = D120
D116 = 44x32	48x34 = C62
D120 = 46x32	50x32 = D124
D124 = 50x32	50x34 = C64

## Conversion table, Waist x Inseam, Women's sizes

C34 = 26x31	26x31 = C34
C36 = 27x31	27x31 = C36
C38 = 28x31	28x31 = C38
C40 = 30x31	30x31 = C40
C42 = 32x32	32x32 = C42
C44 = 33x32	33x32 = C44
C46 = 35x32	35x32 = C46
C48 = 37x32	37x32 = C48
C50 = 39x32	39x32 = C50



**Björnkkläder**